

Rotating Switch Panel Remote

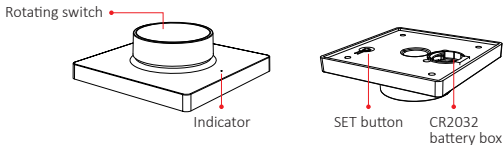
Model No.: K1 / K1-B

Features

It's made by 2.4GHz wireless control technology with low power consumption, long distance, strong ability for anti-interference and quick communication. Power supply is CR2032 battery, the rotating switch can dim brightness and color temperature, it's compatible for MiBoxer single color and CCT LED light.

- Control distance 30m
- One remote supports unlimited LED light
- Magnetic installation method, more convenient

Products Key Diagram



Rotating Switch

Short press: turn on/off light

Rotating: dim brightness

Long press while the light is on: until indicator is blinking, switch to cct dimmable, rotate it to dim color temperature.

(Attention: the device will log out cct mode if user don't operate it within 3 seconds)

Long press while the light is off: enter into night light mode.

Linking Code / Unlinking Code Instructions

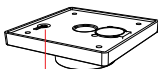
Remark: The light can be working after linking with the remote.

Linking Code Instructions



1

Switch off light, after 10 seconds then switch on again.



SET button

2

Short press " SET " button 3 times within 3 seconds when light on.



3

Lights blink 3 times slowly, means linking is done successfully.



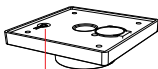
Linking failed if light is not blinking slowly, Please follow above steps again.
(Note: Light that have linked can't link again)

Unlinking Code Instructions



1

Switch off light, after 10 seconds then switch on again.



SET button

2

Short press " SET " button 5 times within 3 seconds when light on.



3

Lights blink 10 times quickly, means unlinking is done successfully.

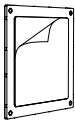


Unlinking failed if light is not blinking quickly, Please follow above steps again.
(Note: Light haven't linked that don't need to unlink)

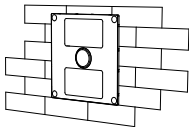
Note: For TRI-C1 triac dimmer, long press "SET" button, the indicator is blinking quickly. device enter into night light mode, for more information, please review instruction of TRI-C1.

Installation

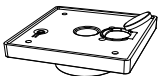
1. Tear out the back tape.



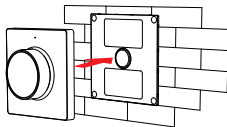
2. Stick the holder on the position where you want.



3. Install CR2032 battery.



4. Put the rotating switch on the front of holder.



Attention

1. Children should use it under the inspection of Adult, avoid to eat button cell.
2. This 2.4GHz remote is precise electronic product; don't use it in humid, high temperature, dust and high voltage environment; Saving it at indoor, dry and no static electricity environment.
3. Please don't use the remote on the wide-range metal or strong electromagnetic wave area, otherwise, it will badly affect the controlling distance.



Made in China